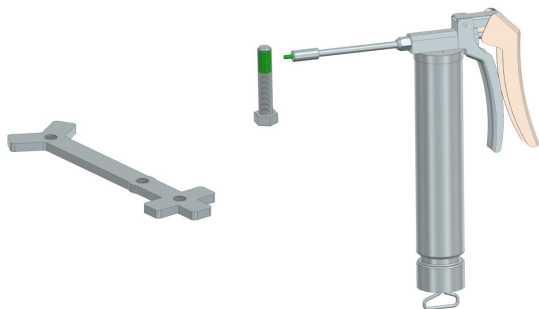


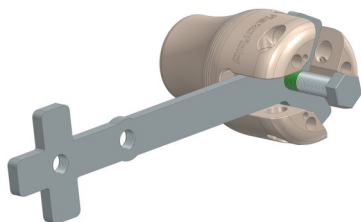
How to use the Prop Puller

1 Grease the thread.



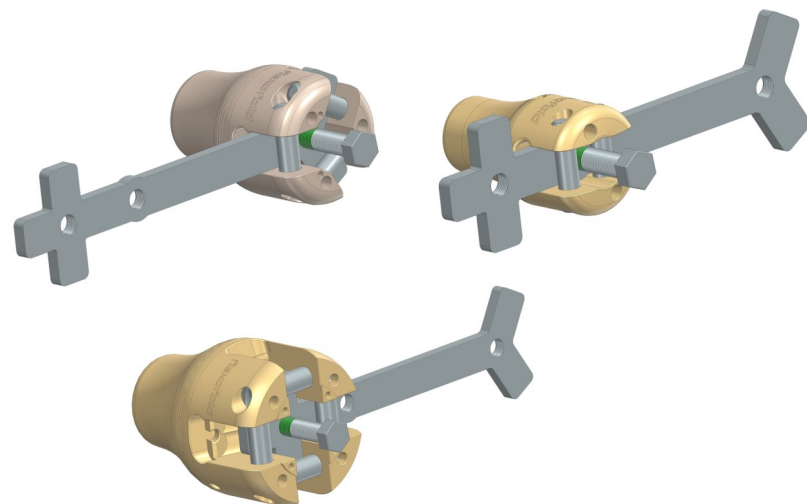
2 Place the puller behind the pivot pins.

For the 2-blade hub, see photo in step 3.

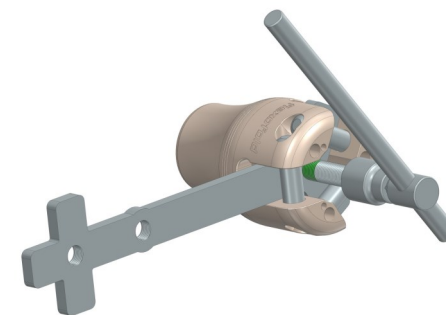


3 Mount ALL the pivot pins and locking screws.

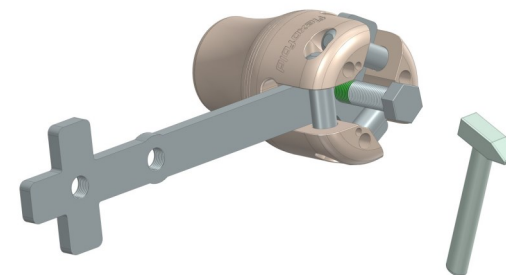
A loose fit of the locking screws will prevent the pivot pins from falling out.



4 Now turn the puller screw so it presses against the shaft end and pulls the hub off.



5 If the hub does not move, strike the screw end to apply a shock impact to the hub.



Tip

Applying heat to the hub at the shaft cone will often help loosen the grip.